

MCA 2025 Winter Convention

"Construction Is Building The Future"



2024 MCA

Excellence in Construction Awards

January 23, 2025 | BW Great Northern Hotel | Helena, MT



**Excellence in
Highway Construction**



**Excellence in
Concrete Construction**



**Excellence in
Building Construction**

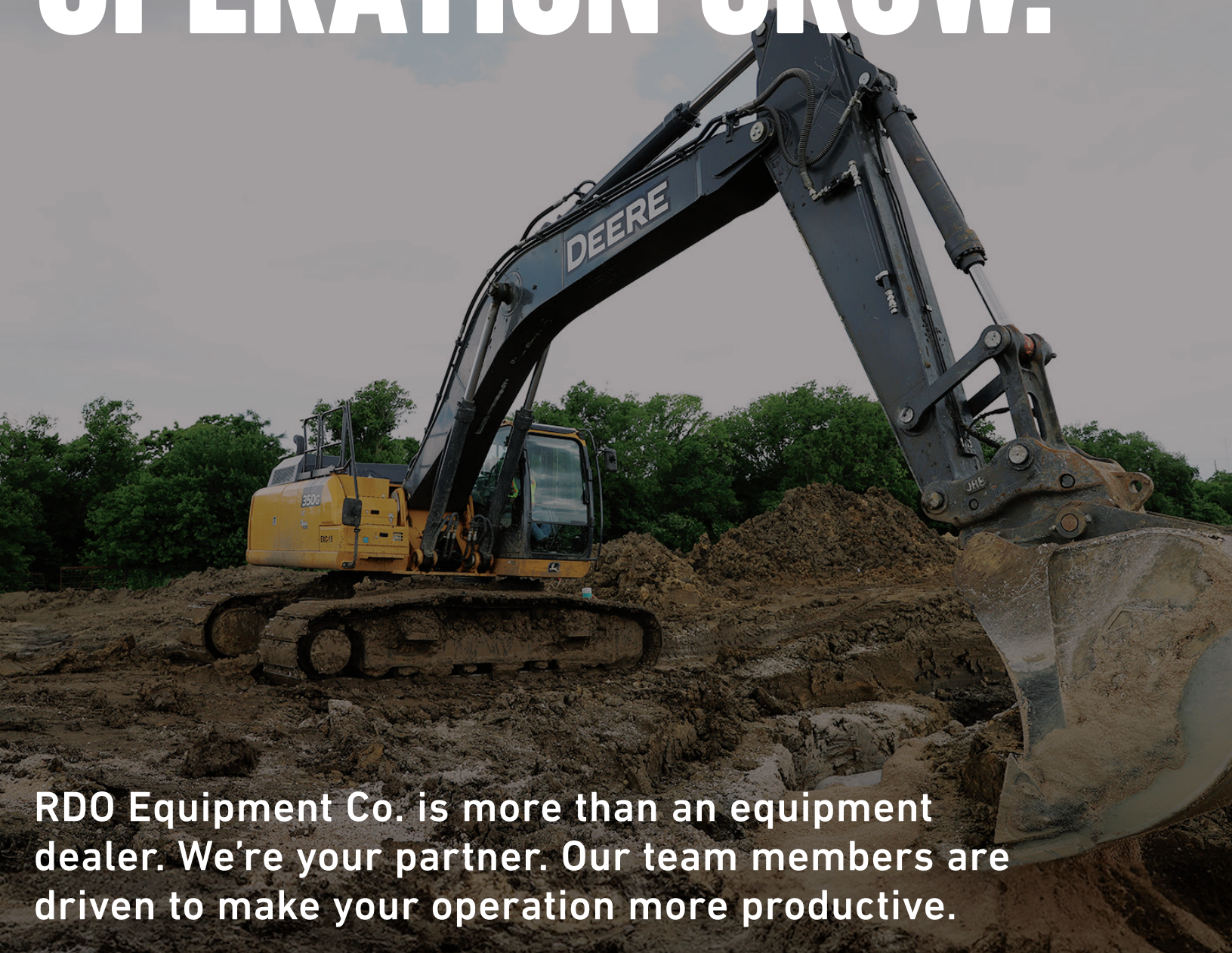


**Excellence in
MCA/MDT Partnering**



**MCA PAC Reception
and Fundraiser**

WELL EQUIPPED TO HELP YOUR OPERATION GROW.



RDO Equipment Co. is more than an equipment dealer. We're your partner. Our team members are driven to make your operation more productive.

Montana
RDOequipment.com



2024 MCA EXCELLENCE AWARDS

Message from the Executive Director:

The rebuild of a 100-year old irrigation structure for the Crow Nation. A state-of-the-art aquatic and recreation center. Safety improvements to a high speed, high fatality roadway. Restoration of an iconic, local landmark bank. Terminal expansion to the airport that serves the "The Crown of the Continent." These amazing projects affect people from all walks of life in our great state.

This year, we recognize seventeen outstanding projects and the contractors who make it all happen. The awards span the categories of Concrete, Highway, Building, Environmental, Partnering, and Workforce Development.

I would like to extend a heartfelt congratulations to our Excellence in Construction Awards winners, and thank all of our applicants for presenting us with their quality work. And thank you to all MCA members for your dedication to our industry, and our association. On behalf of the Board and staff, I wish you all the best in 2025!

David Smith

David Smith, Executive Director

Judges:

Dave Frentress, CalPortland

Gregory Halsted, NRMCA

Jerry Bowser, Helena Sand & Gravel

AGC of Alaska

MCA Staff:

David Smith, Executive Director

Nicole Hanni, Membership Director

Barry Houser, Communications Director

Hailee Olsen, Workforce Director

Dan Kohler, Training Director



MONTANA CONTRACTORS ASSOC.
THE CONSTRUCTION ASSOCIATION



1717 11th Avenue
Helena, MT 59601

(406) 442-4162 | www.mtagc.org

"Building Our Workforce" MCA Education Foundation4
Project: Belgrade High School Panther Trades
General Contractor: R&R Taylor Construction

Concrete - Best Agricultural.....4
Project: Crow Nation Irrigation project, Big Horn County
General Contractor: Martin Construction

Best Specialty Contractor Project4
Project: Summit Hotel Spa Rebuild, Big Sky
Specialty Contractor: Infinity Pools

Highway - Best Paving and Smoothness.....4
Project: Columbus East, Stillwater County
General Contractor: Riverside Contracting

Concrete - Best Paving4
Project: Terminal Expansion, Glacier Park International Airport
General Contractor: Treasure State, Inc.

Building - Best Industrial5
Project: Noller Automotive Supercenter, Kalispell
General Contractor: Martel Construction

Concrete - Best Industrial Commercial.....5
Project: Rocky Boy's Water Treatment Plant Phase 1, Chester
General Contractor: Sletten Construction

Building - Best Commercial5
Project: Scheels Aim High Big Sky Aquatic/Recreation Center
General Contractor: Swank Enterprises

Highway - Best Reconstruction of an Urban/City Project5
Project: Missoula-Lolo, Missoula County
General Contractor: Riverside Contracting

Concrete - Best Bridges.....5
Project: Blackfoot River Bridge, Lincoln
General Contractor: Sletten Construction

Highway - Best Reconstruction of a Rural Project6
Project: SF 169 S-288 Curves, Gallatin County
General Contractor: CK May Excavating

Building - Best Institutional6
Project: University of Montana - Lodge Dining Facility, Missoula
General Contractor: Swank Enterprises

Best Environmental Project6
Project: Salmon Lake Hwy 83 Roadway Reconstruction, Seeley Lake
General Contractor: Kiewit Infrastructure

Highway - Special Recognition6
Project: Variable Message Signs, I-90 from Billings to Three Forks
General Contractor: Montana Lines

Building - Best Historic Restoration6
Project: The National, Bozeman
General Contractor: Langlas & Associates

Partnering Level 17
Kiewit Infrastructure – Salmon Lake, MDT District: Missoula

Partnering Level 27
CK May Excavating – US 191, MDT District: Butte

2024 "Building Our Workforce" MCA Education Foundation

R&R TAYLOR CONSTRUCTION - Belgrade High School Panther Trades

R&R Taylor Construction in partnership with Belgrade High School's CTE program, Panther Trades, brings in high school students to work on site with R&R Taylor employees and learn the hands-on skills necessary for a career in carpentry. While working for R&R Taylor, the students are also enrolled in the State of Montana's pre-apprenticeship program for General Carpentry. The students are required to complete some of the bookwork necessary for the Carpenter's Apprenticeship. The students are able to transfer their work and time to the State's Apprenticeship once they graduate high school, should they wish to continue with a career in construction, potentially fulfilling 50% of the state's requirement for a Journeyman Carpenter.



2024 Concrete Excellence - Best Agricultural

MARTIN CONSTRUCTION - Crow Nation Irrigation project, Big Horn County

The project replaced an irrigation structure that was nearly 100 years old. The concrete and CLSM was completed on time and within the specification of the project. All concrete made the compressive strength before 28-day cure time. Testing on the concrete and CLSM was completed, and all materials met or exceeded the requirements of MDT Section 511. Access to the construction site was constrained by a roadway that was required to remain open along the Little Big Horn River. The work site was deep and the bottom of the work area was 25 feet from the surrounding ground level. Historic Irrigation Structures could not be disturbed or damaged during construction. All concrete and CLSM was pumped using a pump truck and had to be completed under cold weather construction December through February.



2024 Building Excellence - Best Specialty Contractor Project

INFINITY POOLS - Summit Hotel Spa Rebuild, Big Sky

The spa renovation at the Summit Hotel in Big Sky involved key upgrades and overcame several challenges. Notable improvements included the addition of automatic covers to enhance maintenance efficiency and energy conservation in the harsh climate, as well as two seating islands to create "conversation zones," improving the guest experience. A significant challenge was ensuring the foundation's stability. To prevent settling issues that plagued the original spa, helical piers were used to provide a long-lasting, stable base. With a tight timeline to complete the renovation before peak ski season, the project required exceptional teamwork and coordination. Infinity Pools wants to thank Martel Construction for their trust throughout this process. Through clear communication, careful planning, and skilled craftsmanship, deadlines were met without compromising on quality. The result is a durable, functional, and beautiful spa that will serve the Summit Hotel for many years.



2024 Highway Excellence - Best Paving and Smoothness

RIVERSIDE CONTRACTING - Columbus East, Stillwater County

The scope of the project included 8.7 miles of a mill and overlay on Interstate 90, just east of Columbus. This project was set up to crossover traffic head-to-head allowing construction of the closed side of the interstate. The progression of the work started with the bridge deck repair and guardrail installation. Once the bridge repair work was completed, construction traffic was able to completely access all parts of the closed lanes of the interstate. With access to all areas, the milling operation was able to begin. Following the milling operation was an underseal. The underseal was designed to alleviate cracking from propagating through to the top roadway surface. The roadway would then be overlayed with grade S ¾-inch plant mix. New signs, delineators and guardrails were installed after the plant mix was complete. The roadway surface was then completed with a final chip seal and pavement markings. Upon completion, the traveling public was switched head-to-head on the other side and the process was repeated. The plans called for a 0.10' mill depth and a 0.20' plant mix section. This equated to 59,760 tons of grade S ¾ Inch plant mix and 25,000 tons of milling material. 10,600 tons of chips were required for both the underseal and chip seal operations. Due to the grade of the shoulders, 20,962 LNFT of MGS guardrail was required as well.



2024 Concrete Excellence - Best Paving

TREASURE STATE, INC. - Terminal Expansion, Glacier Park International Airport

Treasure State Inc. placed approximately 7,500 cy of Knife River P-501 concrete over a 15,660 SY, 15" thick apron at the Gallatin Park International Airport (GPIA) in Kalispell. TSI used their Gomaco GP3 concrete paver set at 25' wide and equipped with total station machine controls to successfully construct the apron to FAA tolerances under the watchful eyes of the most difficult RPR TSI has worked with to date. The concrete scope started roughly a month behind schedule and workdays were added to the paving plan to better match concrete production/supply. The contracting team

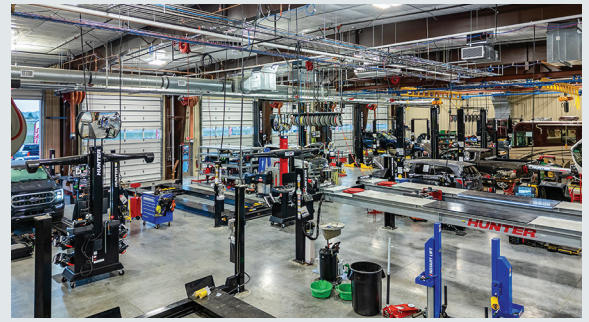


④ worked tirelessly to complete the project within the 2024 construction season.

2024 Building Excellence - Best Industrial

MARTEL CONSTRUCTION - Noller Automotive Supercenter, Kalispell

The Noller Automotive Supercenter is a 27,000-square-foot, state-of-the-art facility designed to service a wide range of vehicles, including large trucks and specialized heavy-duty equipment. Built with a robust pre-engineered metal building (PEMB) framework, this automotive center integrates advanced systems to support high-capacity, efficient service operations. The facility includes sophisticated oil distribution and compressed air systems, ensuring streamlined maintenance processes across service bays. Large hydraulic vehicle lifts provide the capability to service vehicles of all sizes, enhancing versatility and efficiency. Noller Automotive Supercenter stands as a comprehensive solution for high-demand vehicle servicing, combining durability, functionality, and advanced technology to meet diverse service needs.



2024 Concrete Excellence - Best Industrial Commercial

SLETTEN CONSTRUCTION - Rocky Boy's Water Treatment Plant

Phase 1, Chester

This project involved the construction of a 74,000 square foot structure housing and an 11-million-gallon-per-day conventional water treatment facility for the Chippewa Cree Tribe. The treatment process features flocculation, plate settlement, and filtration systems, along with chemical feed and necessary pumping equipment. The build utilized over 7,200 cubic yards of cast-in-place concrete, precast tilt-up exterior panels, and structural steel framing. The project is part of a larger regional water system which will provide potable water to seven counties in north-central Montana.



2024 Building Excellence - Best Commercial

SWANK ENTERPRISES - Scheels Aim High Big Sky Aquatic/Recreation Center, Great Falls

The Scheels Aim High Big Sky Aquatics and Recreation Facility is a 45,000 SF facility that is the central location for city-sponsored indoor recreation programs, skills and personal development courses, multiple fitness options, and aquatic training for the local military community (Malmstrom Air Force Base and the Montana Air National Guard) of Great Falls. The facility contains full indoor aquatics, including a 25 meter 8-lane lap pool, a recreational pool complete with a lazy river, warming pool and waterslides. The facility also sports a full-size gymnasium to accommodate basketball, volleyball and pickle ball; cardio and weight training areas; a child-care area with an outdoor playground and outdoor splash pad; and multipurpose classrooms/meeting rooms which can accommodate exercise classes as well as parties. A walking track above the gym provides the community, especially seniors, a safe place to walk and exercise. A sauna is easily accessible between the locker rooms. The lobby houses a sitting area as well as a fireplace that provides an inviting atmosphere to the building design.



2024 Highway Excellence - Best Reconstruction of an Urban/City Project

RIVERSIDE CONTRACTING - Missoula-Lolo, Missoula County

The Missoula-Lolo surfacing project was successfully completed with zero work-related accidents and a high standard of quality, all in the dead of the night. Daily commuters traveling the corridor had minimal inconvenience during the eight-week project. But, if you showed up at night, you were treated to a well-orchestrated equipment and light show, reminiscent of the 1970's movie, Close Encounters of the Third Kind. Riverside, Knife River, Mountain West and others combined forces to operate as much trucking, milling, and paving equipment as has likely ever been assembled on one project in Montana. And all thanks go to the 110+ hard working men and women who altered their sleep schedules, so that the rest of the world wouldn't be inconvenienced by road construction. In the end, Riverside delivered a 7.6-mile resurfacing project with guardrail and median upgrades, both urban/rural, all in the dead of the night.



2024 Concrete Excellence - Best Bridges

SLETTEN CONSTRUCTION - Blackfoot River Bridge, Lincoln

The project featured structure removal, new structure construction, bridge curb, bridge rail, approach slabs, Portland cement concrete paving, slope paving, deck grooving, rip rap, bioengineered bank, grading, gravel, new private approaches, fencing, drainage, pedestrian passes, and guardrail. After demolition of the structure, temporary ramps for work bridge access were constructed. A 120-foot work bridge was then installed, concurrent with rip rap and bioengineering bank installation to facilitate drilled shaft and bridge abutment work. Following work bridge and bridge abutment completion, the steel truss was delivered and erected. This truss superstructure consisted of six different truss sections with eleven floor beams and fifty stringers. The bridge deck was then formed in 40 separate bays and poured with 122 cubic yards of concrete. Concurrent to structure installation was bridge end backfill and grading. This allowed Sletten to swiftly pour the approach slabs and Portland cement concrete paving sections at the bridge approaches. The concrete driving surfaces were then transversely grooved to increase surface friction. Once approach work was complete, embankment protectors and guardrail were installed with slope paving and curb installed for water erosion mitigation improvement.



2024 Highway Excellence - Best Reconstruction of a Rural Project **CK MAY EXCAVATING - SF 169 S-288 Curves, Gallatin County**

This project consisted of highway safety improvements at two rural locations in Gallatin County. Both locations have been the scene of many fatalities over the years due to the high speeds, nonexistent shoulders, tight curves, and narrow bridges. The bridges were replaced with a 26' x 11' and a 22' x 10' box culvert. Each box culvert section weighed approximately 55,000 lbs. and CK May Excavating placed over 1,100 tons of precast concrete. This project also required a unique diversion ditch construction as well as a mixing and placement of native material and imported rip rap embedment for the varying hydraulic fluctuations of Camp Creek and aquatic fish habitat. During construction, a 1930's era road was discovered in the new highway road prism which required the addition of over 35,000 CY of excavation and embankment. With these unexpected challenges, we were able to keep the project on schedule.



2024 Building Excellence - Best Institutional **SWANK ENTERPRISES - University of Montana: Lodge Dining Facility, Missoula**

The University of Montana's new Lodge Dining Facility is located in the center of campus, looking east over the oval to Montana Hall. At 44,000 square feet, the two story building features high ceilings and open spaces, outdoor seating with a fire place on the ground level patio and two balconies for outdoor seating overlooking the campus. A full kitchen and seven unique food venues offer students a wide variety of culinary experiences, serving over five thousand meals per day. The finishes bring characteristics of iconic Montana communities into the venue themes in an expansive environment for students to eat, gather and study. The building began serving students in August of 2024, and is on track to be certified LEED Gold.



2024 Best Environmental Project **KIEWIT INFRASTRUCTURE - Salmon Lake Hwy 83 Roadway Reconstruction, Seeley Lake**

The Salmon Lake project reconstructed 4.2 miles of Montana Highway 83 with the goals of widening the roadway and creating a safer corridor for local and tourist traffic. The project was situated between Salmon Lake and the surrounding mountains. Environmental conservation was a top priority for the project team, especially given the close proximity to Salmon Lake. Throughout the project's duration, the Salmon Lake project positively impacted the local community through philanthropic donations and by hiring local employees and contractors. The project was highly successful, providing the Montana Department of Transportation and the local community with a safer road, with no unintended environmental impacts or safety incidents during construction.



2024 Highway Excellence - Special Recognition **MONTANA LINES - Variable Message Signs, I-90 from Billings to Three Forks**

This \$7.8M project was designed to increase the safety of the traveling public along the I-90 corridor. The project included 17 massive Variable Message Signs, 34 road closure gates, roadway illumination, flashing signs, guardrail, as well as other significant signing and electrical upgrades. All of these elements were strategically placed among 23 sites along I-90 between Three Forks and Billings with the intention of alerting the traveling public to weather and safety events, as well as providing infrastructure to quickly and safely close and divert traffic during such events. Careful and constant planning and coordination between Montana Lines, Mountain West Holding Company, and the owner, were key to the success of the fast-paced and widespread project.



2024 Building Excellence - Best Historic Restoration **LANGLAS & ASSOCIATES - Story Mill Community Park, Bozeman**

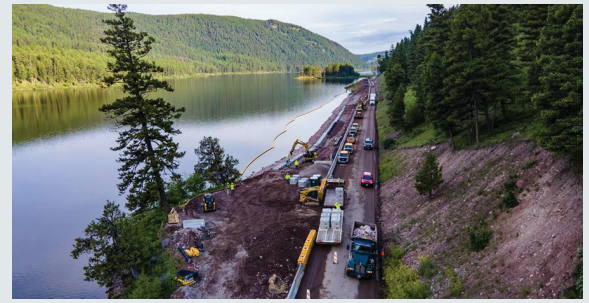
The Commercial National Bank, complete with it's tall arched windows, grand public space and ornate cornice first opened to the public in 1920 with much fanfare. For half a century, the 5 story, 40,000 sf building at 104 East Main Street in downtown Bozeman looked the same as it was built; a sturdy limestone base, topped with pale bricks and 40' flagpole on the roof. In the spirit of modernization, the structure received a "facelift" in 1970 in which the entire façade was encased in concrete portals, epoxy aggregate, tinted light wells and a blocky white parapet. In 2022, new ownership with an exciting vision to bring back the once landmark building to its original splendor, construction commenced on 'The National'. Thirty months later, with a completely restored exterior, full seismic upgrade, a current code compliant interior and an 8,000 sf addition, The National is open to the public.



2024 Partnering Level 1

KIEWIT INFRASTRUCTURE - Salmon Lake, MDT District: Missoula

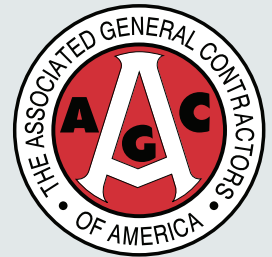
There were ongoing issues with sizable rocks falling from the mountain, occasionally landing on the roadway and, at times, hitting vehicles. To mitigate this hazard, a wire mesh attenuator was installed on one slope, and rock catchment ditches with concrete barriers were placed along the mountainside to keep fallen rocks on the road. The original roadway lacked shoulders, creating unsafe conditions for drivers and bicyclists who frequently travel the route. The project added 4-foot shoulders to both sides of the roadway throughout the corridor, as well as frequent turnouts on each side of the road. Guardrails and permanent concrete barriers were installed on both sides to further enhance safety. Managing traffic was a significant challenge, as this is a major corridor to Glacier National Park. Trac-actuated signals, paired with level-two monitoring, PTZ cameras, and driveway-automated devices, were used to minimize wait times for the public traveling through the project area. The corridor was paved with plant mix asphalt and finished with chip and fog seal.



2024 Partnering Level 2

CK MAY EXCAVATING - US 191, MDT District: Butte

This project is located on US-191 south of Bozeman on the route to Big Sky and Yellowstone National Park. The average daily travel was well over 15,600 vehicles and is the busiest two-lane highway in Montana. The failing bridge on US 191 needed to be replaced and installed prior to April 15th. Prior to start of the project, it was realized the designed detour was still on the existing bridge. This created an immediate and potentially catastrophic problem with the removal of the existing bridge and installation of the new reinforced concrete box culvert. CK May was able to successfully navigate the problem and received the culvert section a little later than scheduled, but they were able to adapt and install more efficiently to meet the deadline. Additionally, Northwestern Energy was involved since there were obstacles with proximity to overhead power poles and short overhead electrical services crossing the new detour. The end project was the fruit of the partnering efforts.



MONTANA CONTRACTORS ASSOC.
THE CONSTRUCTION ASSOCIATION

MCA Mission Statement

The MCA's mission is to deliver value and opportunity to our member firms. We support and assist our members by advocating for our industry in the legislature and leveraging the strength of the Associated General Contractors of America.

MCA Vision

The Montana Contractors Association is the premier membership organization representing Montana's construction industry and professionals while improving the quality of life and safety in our communities.

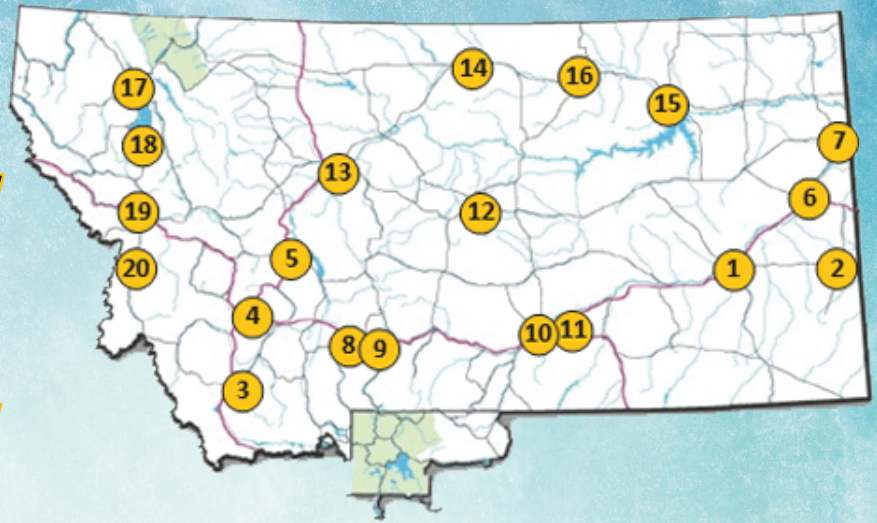
MCA Values

The MCA recognizes the following values of the organization and our members:

- Professionalism • Generosity • Collaboration • Leadership

www.mtagc.org | www.buildmontana.org

2025 One-Call Excavator and Utility Training



Fun, interactive, and interesting training for professional excavators, contractors, and member utilities regarding the One-Call / Call Before You Dig system, safe excavation, and understanding your rights and responsibilities under the Montana One Call Law. Studies of previous excavation accidents and how they may have been prevented.

Free gloves to all attendees! Attendees can win a \$100 or a \$50 cash giftcard at each location! (MUCC Board members and family are not eligible to win)

Meeting with some of your local utility company's employees is a chance to discuss excavation-related issues. You will also get excavation requirements and safety information about digging near pipelines from pipeline companies operating in your area.

Morning Meetings Schedule:

7:30 am – Meal is served

8:00 am – Excavator Training Starts

Evening Meetings Schedule:

5:30 pm – Meal is served

6:00 pm – Excavator Training Starts

For a full schedule of dates, times and location, please visit:

<https://www.montana811.org/calendar/2025-excavator-training/>

**Know what's below.
Tap, Click, or Call
811 Before you dig.**

