



**MONTANA CONTRACTORS ASSOC.
THE CONSTRUCTION ASSOCIATION**

2025 MCA Excellence in Construction Awards



- **Concrete**
- **Highway**
- **Building**
- **Partnering**
- **Environmental**
- **Workforce**
- **Safety**

**January 22, 2026
DoubleTree Hotel
Billings, MT**



TRUCK & EQUIPMENT

BUILT TO WORK.

We back every machine with expert support, reliable parts, and a commitment to our partnerships.



www.transourceusa.com

2025 Building Excellence Award: “Best Specialty Contractor Project”

SPECIALTY CONTRACTOR: Encore Electric

West Yellowstone Airport

Encore Electric played a key role in the transformation of the West Yellowstone Airport terminal, a project that blends Montana’s rustic and proud character with modern design and advanced technology. Working two hours from the nearest city, the Encore Electric team delivered complex electrical systems, data and security infrastructure, and a custom lighting design that highlights the building’s wood framing, tongue-and-groove ceilings, and even the airport’s original 1930s beacon, now a centerpiece in the terminal bar. Operating under stringent FAA “Buy American” requirements and in one of the state’s most remote regions, Encore Electric overcame logistical challenges through creative problem-solving, extensive prefabrication and seamless teamwork with Martel Construction. The result is a modern, energy-efficient gateway to Yellowstone National Park.



2025 Highway Excellence Award: “Best Reconstruction, Rural Project”

GENERAL CONTRACTOR: CK May Excavating, Inc.

Bozeman Hill - East

The Bozeman Hill – East project rectified a dangerous and, in some places, non-existent shoulder along 44 miles of highly travelled interstate between Bozeman and Livingston. Paving included 32,000 tons of plant mix and 2,200 LF of ditch paving with cross slopes up to 33%. This ditch paving also required energy dissipators which led CK May to creative solutions. To build the asphalt dissipators, CK May fabricated custom asphalt formwork and placed asphalt by loading a tilt-rotator equipped excavator with a shuttle buggy. CK May performed rock excavation and blasting to remove 126,000 tons of rock within a stone’s throw of traffic. Challenges both known and unknown were faced, including the existing BNSF tunnel, power and gas transmission mains and maintaining safety for the travelling public.

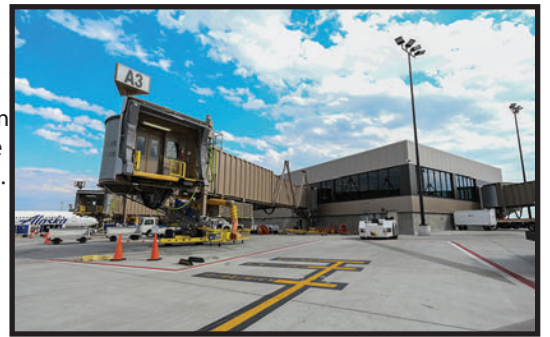


2025 Building Excellence Award: “Best Institutional Project”

GENERAL CONTRACTOR: Sletten Companies

Billings Logan International Airport Terminal Expansion

The Billings Logan International Airport Terminal Expansion Project consisted of a 60,000sf expansion onto the existing airport. This expansion was a 2-level concept providing room for airport and airline operation at the first ramp level and customer access to all the 9 gates at the second concourse level. Throughout the 5 phases of construction, renovations also took place throughout the entirety of the airport to tie the existing building into the newly designed expansion. With the obvious fact of keeping the airport functioning and its customer base operating, numerous phases of construction were required to maintain airport security, continuous foot traffic to and from the concourse, keeping travelers protected and away from construction. The 18”-24” thick tarmac was replaced and bolstered with additional layers of concrete and asphalt sub layers.



2025 Highway Excellence Award: - “Best Paving/Smoothness Project”

GENERAL CONTRACTOR: Riverside Contracting, Inc.

Park City - West

The Park City - West project included crossovers, cold milling, a westbound SAMI interlayer, plant mix surfacing, seal and cover, guardrail, rumble strips, polymer overlay, bridge deck crack sealing, and pavement markings. Located along I-90 from RP 417 to RP 427 near Park City in Stillwater County, the project spanned approximately ten miles and was completed on time and under budget. Riverside successfully met a series of unique challenges, including complex sequencing and first-time operations such as applying a scrub seal SAMI. Through careful planning, coordination, and experienced crews, Riverside completed the project efficiently and earned top quality incentives. The company takes pride in the teamwork of its employees and subcontractors and remains committed to delivering high-quality workmanship, innovation, and attention to detail across Montana’s transportation system.



2025 Building Excellence Award: “Best Historic Restoration Project”

GENERAL CONTRACTOR: Dick Anderson Construction

Billings City Hall

In the heart of downtown Billings, Dick Anderson Construction successfully transformed the former 1963 U.S. Federal Courthouse into a new City Hall and Law and Justice Center. This 215,000sf renovation consolidated 17 departments under one roof, streamlining operations and revitalizing the city’s core. The project prioritized future expansion, community gathering, and security, while preserving the building’s mid-century characteristics. The team collaborated with the National Park Service and environmental experts to ensure code compliance and historic preservation, earning a place on the National Register of Historic Places and nearly \$6 million in tax credits. Sustainable strategies included reusing existing infrastructure, implementing high-performance upgrades, and incorporating durable, timeless materials. The new City Hall centralizes police, court, and attorney facilities, enhances security and efficiency, and fortifies downtown with a first-floor restaurant and expanded office and tenant space.



2025 Building Excellence Award: "Best Industrial Project"

GENERAL CONTRACTOR: Swank Enterprises

SemiLink Materials Phase 1

The new SemiLink Materials facility in Stevensville is dedicated to specialty chemical processing and handling for distribution to semiconductor manufacturing clients. The facility is located on 3.7-acres and includes a 14,300 SF process building supported by exterior bulk nitrogen and chemical waste systems. The process handles hazardous chemicals including water reactive, flammable, pyrophoric or corrosive materials. The hazardous occupancy buildout reflected the specific chemical risks. Two fire protection systems were installed: dry chemical and fire sprinkler. The HVAC controls required emergency exhaust and emergency shutdown, with an emergency backup generator, due to the HVAC system's life-critical status. The buildout included clean rooms meeting ISO 5 (class 100) and ISO 6 (class 1000) standards. Laboratories had high-purity piping and analytical instruments for product quality verification. Site infrastructure included upgrades to NG supply, 3-phase power, septic, water, fire water, paving and lighting.



2025 Highway Excellence Award: "Best Urban/City Project"

GENERAL CONTRACTOR: Williams Civil Construction

MSU Grant Street Pedestrian Mall

This project consisted of the complete demolition of a third mile of Grant Street (in the heart of the Montana State University campus), and construction of a new pedestrian mall spreading across several acres of campus, providing foot traffic access to all the buildings within this corridor. This work included over 110,000 SF of concrete sidewalk, 2,300 LF of new curb, nearly 5,000 SY of 4" asphalt, a new roundabout at the intersection of 7th and Grant Streets, a new entry and ADA parking lot at the Strand Union Building, a revamped and improved Veteran's Plaza, multiple modifications and upgrades to the gas, sewer, water, storm, irrigation, and electrical utilities on-site, including over 500 LF of new water main, and acres of new vegetation, shrubs, flowers, and trees, sequenced throughout the project to replicate the actual ecosystems of Montana as if you were to travel it from east to west.



2025 Concrete Excellence Award: "Best Paving Project"

GENERAL CONTRACTOR: Treasure State, Inc.

MSU Grant Street Pedestrian Mall

MSU Bozeman converted 4 blocks of W. Grant Street at the heart of campus into the Grant Street Pedestrian Mall. Treasure State Inc. placed 2,200 cy of concrete over an area encompassing 2.5 acres and in 2500 feet of curb and gutter with three separate mmGPS and/or LPS controlled concrete machines. Their 4-track paver helped place the 25' wide, 900-foot-long pedestrian trail with hand stamped borders as well as a monolithic curb and apron drop-off horseshoe in front of the MSU SUB. Their 3D bridge deck machine assisted in the placement of a crowned 7,200 sf oval-shaped centerpiece plaza. The new roundabout at the east end of the project is highlighted by a Bobcat gold truck apron with the surrounding curb and sidewalk slip-formed with their 3-track machine. The team executed the project plan flawlessly, delivering MSU a beautiful new pedestrian mall two months ahead of schedule.



2025 Concrete Excellence Award: "Best Water, Sewer, Utilities Project"

GENERAL CONTRACTOR: NW Construction, Inc.

Fresno Dam and Reservoir Dam Modifications

The Fresno Dam and Reservoir Modification project involved the comprehensive strengthening and upgrade of an existing earthen dam, featuring advanced water management and seepage control systems. Key components included an extensive dewatering system to stabilize groundwater, a vertical sand filter trench to intercept seepage, a precision-engineered zoned embankment for stability and durability, and a toe drain system to safely channel seepage away from the structure. Designed with safety, environmental considerations, and longevity in mind, this integrated approach significantly improved dam stability, safety, and operational lifespan. The project exemplifies engineering excellence through its strategic combination of sophisticated design and construction practices, setting a new standard for dam rehabilitation and infrastructure resilience.



2025 Building Excellence Award: "Best Commercial Project"

GENERAL CONTRACTOR: Swank Enterprises

Barnard Construction - Office Headquarters

Barnard Construction's new 130,000-square-foot headquarters in Bozeman, reflects the company's strength, craftsmanship, and connection to place. The four-story facility features fully curved exterior walls of steel, brick, and glass, offering panoramic mountain views and a fluid, sculptural form with no straight façades. Inside, 300 private offices provide individual climate control and acoustical comfort, balanced by open collaboration zones that promote teamwork. The project's complexity required advanced craftsmanship and innovation: 16,240 linear feet of curved construction, custom steel fabrication, Belgian curved glazing, and precise BIM coordination. Swank pioneered the use of HP's SitePrint robotic layout technology to achieve millimeter accuracy. Through early collaboration,



creative problem-solving, and exceptional teamwork, Swank delivered this demanding project on time and on budget, transforming an ambitious architectural vision into a landmark building that embodies Barnard's values.

2025 Concrete Excellence Award: "Best Bridges Project"

GENERAL CONTRACTOR: Sletten Companies

Timber Bridges - Glasgow Area

To meet the aggressive schedule to design and construct 16 new crossings in less than 3.5 years, Sletten Construction developed economical efficient replacement structures and utilized multiple crews working con-currently at various sites. Over thirty different subcontractors and suppliers were involved throughout the project's duration, requiring constant communication and coordination. Sletten established weekly meetings at the beginning of the project and continued this throughout the project's duration. This meeting was essential in planning the project's 2-week lookahead schedule while maintaining good communication between all parties. Sletten Construction and its subcontractors and suppliers were able to design and replace sixteen structures, spanning over 150 miles on Highways US 2, MT 24, MT 248, and MT 251, within three construction seasons.



2025 Safety Excellence Award: "Safety MVP"

GENERAL CONTRACTOR: Langlas & Associates

Clay Brozovich

Clay Brozovich has demonstrated exceptional dedication to the advancement of workplace safety and health through his professional achievements and ongoing leadership in 2025. Since earning his Certified Safety Professional (CSP) credential in December 2023, Clay has continued to exemplify the highest standards of the safety profession. The CSP certification, recognized as one of the most respected credentials in the field, reflects his comprehensive knowledge of hazard control, risk management, and regulatory compliance. Clay also serves as the President-Elect of the Montana Chapter of the American Society of Safety Professionals, a role that highlights his leadership within the broader safety community. Through this position, he helps guide chapter initiatives, support member development, and foster collaboration among safety professionals throughout the region.



2025 Safety Excellence Award: "Top Safety Company"

GENERAL CONTRACTOR: Oftedal Construction, Inc.

Oftedal Construction maintains a proactive, people-focused safety culture supported by training, communication, and strong leading indicators. Key protocols include structured Short Service Employee interviews, held within six months of hire to reinforce understanding of applicable employment safety topics, company values, and expectations. Daily safety meetings, documented inspections, near-miss and observation reporting, and daily Job Hazard Analyses ensure continuous hazard recognition and prevention. Monthly company-wide safety stand-downs review leading-indicator data, share best practices, and reinforce accountability. The company also invested in improved infrastructure, including redesigned fueling and lubricant systems that reduce risks and exposure, enhance ergonomics, and significantly reduce spills and environmental contamination. Comprehensive onsite training strengthens competency in high-risk tasks.



2025 Concrete Excellence Award: "Best Agricultural Project"

GENERAL CONTRACTOR: NW Construction, Inc.

St. Mary Canal Siphon Replacement

The Saint Mary Canal Siphon Replacement Project restored water delivery to over 180,000 acres of farmland following the catastrophic failure of the siphon in 2024. Irrigation deliveries were halted from June 17, 2024 until the replacement was completed in June 2025. Drought conditions worsened the situation, which created even more urgency to restore the damaged siphon to ensure water deliveries could continue. Led by NW Construction and oversight by the Milk River Joint Board of Control, the project installed over 6,500 feet of 90-inch steel pipe and constructed cast-in-place structures using 2,300 cubic yards of concrete. Real-time collaboration enabled design improvements and accelerated progress. Despite harsh winter conditions and remote terrain, the project was substantially completed in approximately one year, delivering a resilient system to serve the Milk River Basin for generations.



2025 Environmental Excellence Award: "Best Environmental Project"

GENERAL CONTRACTOR: NW Construction, Inc.

St. Mary Canal Siphon Replacement

The Saint Mary Canal Siphon Replacement Project delivered critical environmental benefits by restoring a reliable water supply to the Milk River Basin, an area supporting wetlands, riparian corridors, and wildlife habitats across more than 700 miles. The siphon failure in 2024 disrupted water flows essential to sustaining migratory bird populations, native fish species, and vegetation along the river corridor. By rapidly replacing the failed infrastructure, the project helped prevent long-term ecological degradation. The new 90-inch steel pipeline improves hydraulic efficiency and reduces the risk of future failures that could lead to erosion, sedimentation, or habitat loss. The canal was reshaped and lined with reinforced HDPE and rock protection to stabilize banks and reduce turbidity, directly benefiting downstream ecosystems. Air release valves and underdrain systems were incorporated to maintain flow stability and minimize environmental stress.



2025 MCA/MDT Partnering Excellence, Level 2
GENERAL CONTRACTOR: CK May Excavating, Inc.

Bozeman Hill; MDT Butte District

This complex Interstate 90 (I-90) corridor project required precision coordination by multiple stakeholders to meet the completion schedule. This 22-mile interstate paving had the added challenge of narrow width paving and a schedule that required early spring construction at an elevation of over 5,700 feet. To meet the schedule for this project, specialty narrow width paving was done, while coordinating the drilling and blasting portion of the project concurrently. Although weather was a major hinderance to the completion of the project, the greatest challenge was the 2,900 long railroad tunnel and high-pressure natural gas transmission pipeline that ran within 500 feet of the rock blasting. This sensitive work required coordination of explosion specialists, natural gas transmission specialists, BNSF personnel to monitor and stop inbound trains, closing the interstate, and providing quick response crews in the unlikely event of an incident on I-90 or within the BNSF right of way.



2025 MCA/MDT Partnering Excellence, Level 1
GENERAL CONTRACTOR: Riverside Contracting, Inc.

Wolf Creek - North & South; MDT Great Falls District

This large, multi-year project that had a theme of respect, communication and pride in work. Contractors and the owner set a standard that everyone can follow. One obstacle that occurred was where to place old road material. Riverside, MDT and local landowners came to an agreement to place waste within the state's right-of-way and some private land. Doing this saved Riverside from leaving the project limits. Riverside agreed to extend drainage culverts at its own cost and to install a 26 feet deep manhole. Some seeding was also covered by Riverside. When Riverside would ask for something as simple as a moisture test to an MDT inspector taking the test within the next 30 minutes helped build trust. A significant impact to all parties occurred when two MDT members passed away in the summer of 2024. The understanding and compassion shown helped ease the tension.



2025 MCAEF Award: "Building Our Workforce"
GENERAL CONTRACTOR: Williams Companies

Williams Academy

The Williams Companies launched the Williams Academy in 2024 to provide structured, accredited training that aligns directly with industry needs that the Williams Companies are experiencing first-hand. The Academy delivers accredited apprenticeship and pre-apprenticeship programs in plumbing, HVAC, and heavy equipment operation as of 2025, blending classroom learning, hands-on labs, and real-world field experience. Apprentices progress through the nationally recognized curriculum while completing in-person labs at the new Academy building that is designed to replicate real jobsite conditions and provide access to simulators, equipment, and fabrication tools. Williams Academy is a nationally Accredited Training Center, a state-approved apprenticeship training provider, and an FMCSA ELDT/CDL-certified training provider. The program also holds VA approval for GI Bill funding, creating opportunities for veterans to transition into trades careers.



2025 MCA EXCELLENCE AWARDS

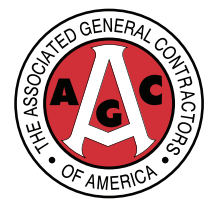
Judges:

Scruggs Concrete, Thomasville, GA
Crawfords Concrete Construction, Gallatin, TN
AGC of Alaska:

- Sarah Lefebvre, Colaska Inc.
- Mike Klebs, KLEBS Mechanical Inc.
- Justin Shields, Mass Excavation, Inc.
- Farrell Cobbs, Alaska AGC
- Matt Chacho, GHEMM Company, LLC
- Carrie Jokiel, ChemTrack Alaska, Inc.

MCA Staff:

David Smith, Executive Director
Nicole Hanni, Membership Director
Barry Houser, Communications Director
Hailee Olsen, Workforce Director
Craig Crawford, Training Director
Miranda Griffis, Program Director



MONTANA CONTRACTORS ASSOC.
THE CONSTRUCTION ASSOCIATION

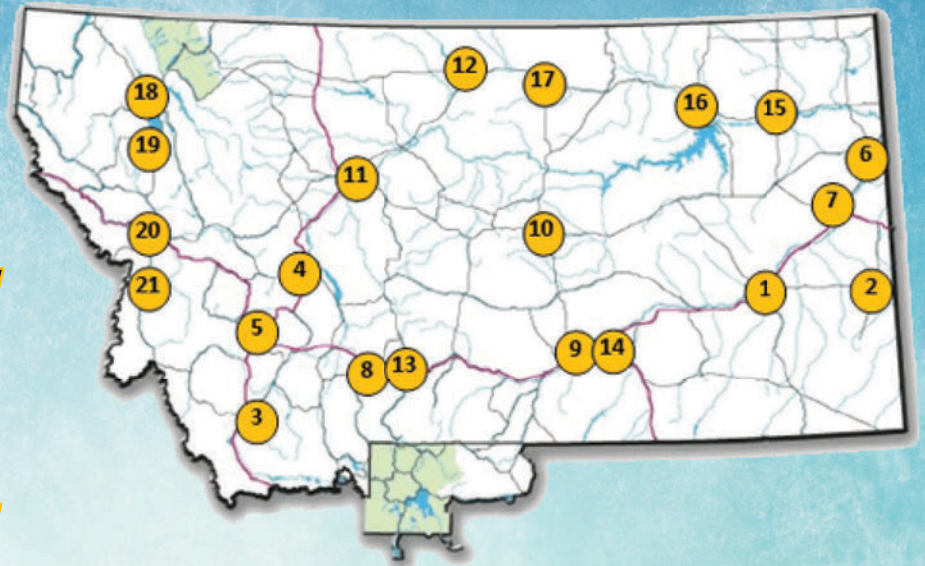


*A Workforce Initiative of the
MCA Education Foundation*

**1717 11th Avenue
Helena, MT 59601**

(406) 442-4162 | www.mtagc.org

2026 One-Call Excavator and Utility Training



Fun, interactive, and interesting training for professional excavators, contractors, and member utilities regarding the One-Call / Call Before You Dig system, safe excavation, and understanding your rights and responsibilities under the Montana One Call Law. Studies of previous excavation accidents and how they may have been prevented.

Attendees can win a \$100 or a \$50 cash giftcard at each location!
(MUCC Board members and family are not eligible to win)

Meeting with some of your local utility company's employees is a chance to discuss excavation-related issues. You will also get excavation requirements and safety information about digging near pipelines from pipeline companies operating in your area.

Morning Meetings Schedule:

7:30 am – Meal is served

8:00 am – Excavator Training Starts

This year's meetings will all be in the morning, with 21 different meeting dates and locations available.

For a full schedule of dates, times and location, please visit:

<https://www.montana811.org/calendar/2026-excavator-training/>





BUILDING MONTANA TOGETHER

Your projects shape Montana's future — and we're here to help you succeed. We provide the equipment, technology and support you need to get the job done right.

MONTANA

RDOequipment.com



JOHN DEERE



RDO[®]
EQUIPMENT CO.